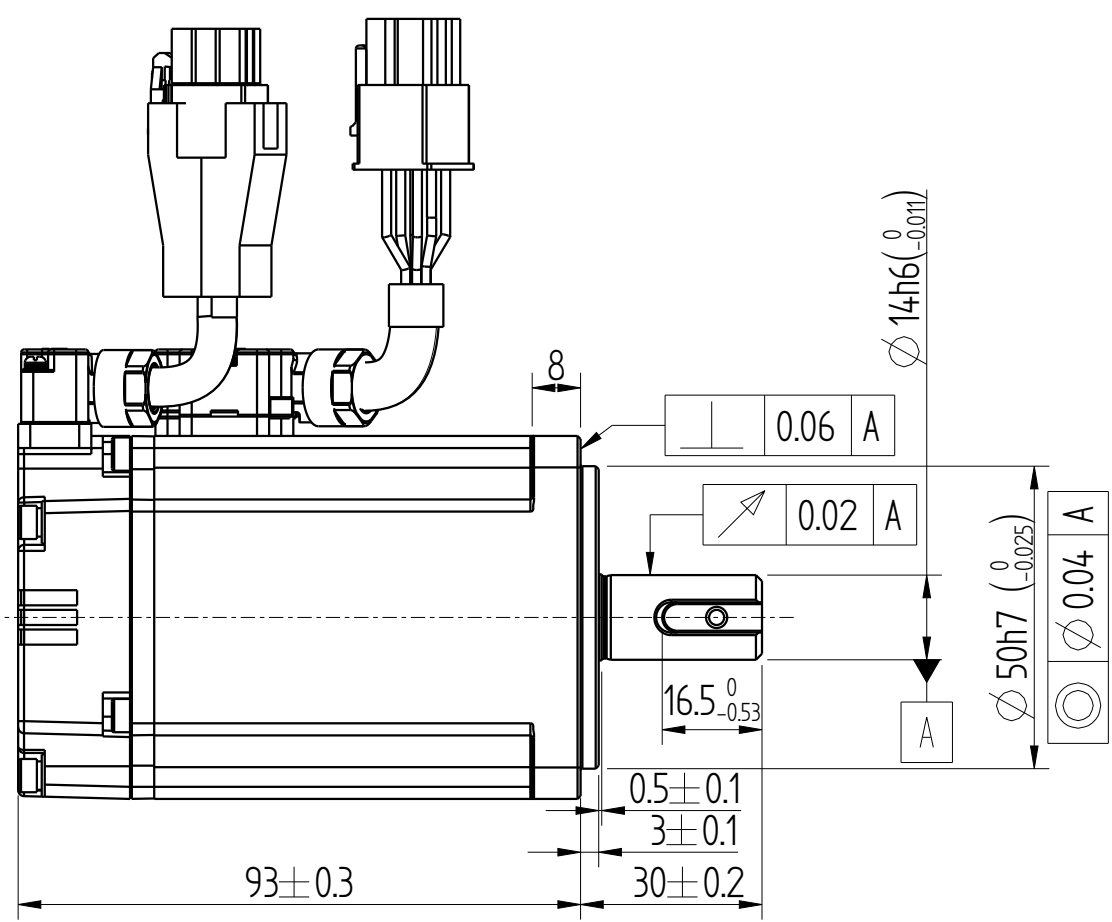
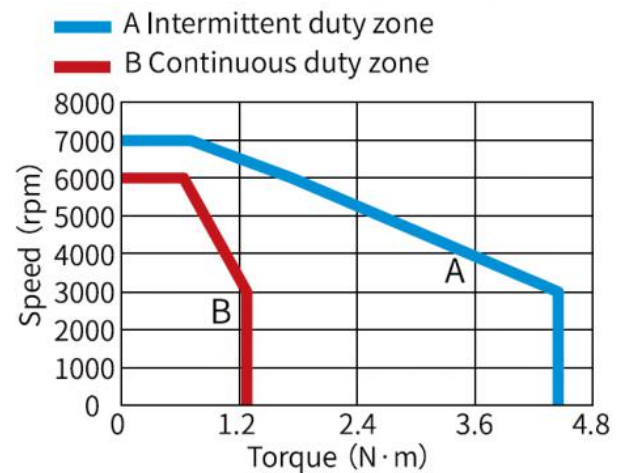
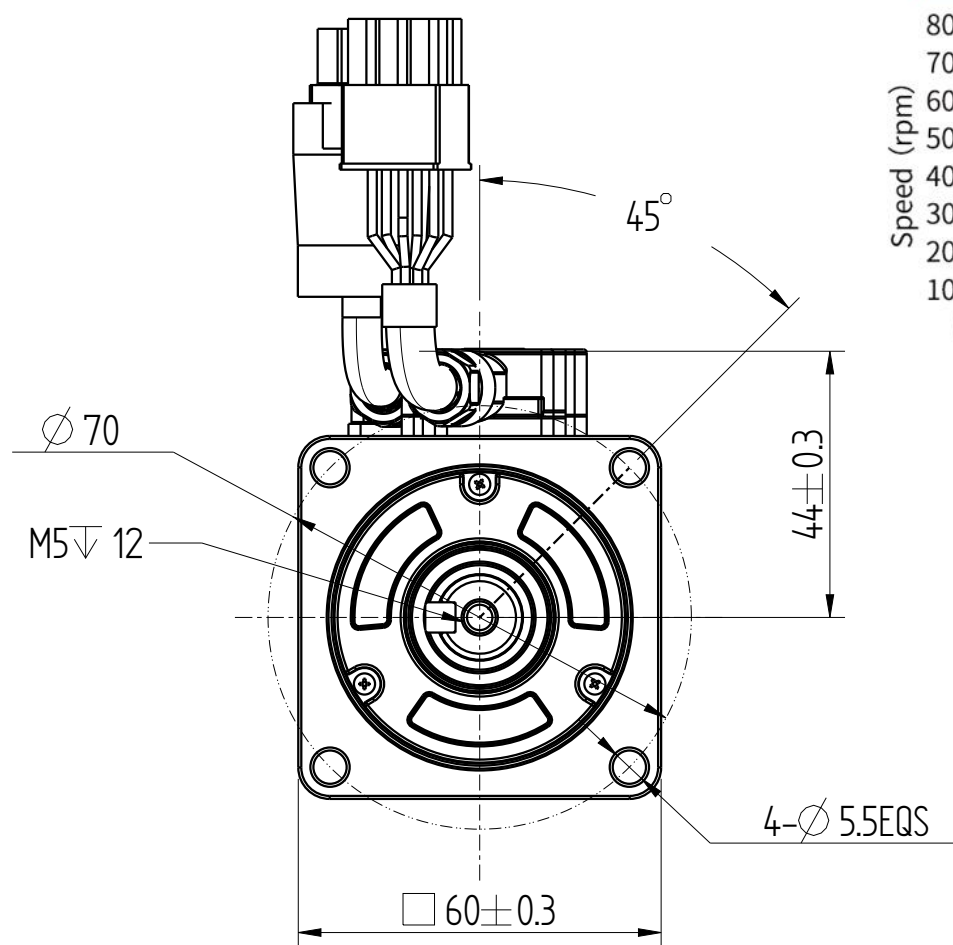


Copyright:Copyright infingmengt reserved

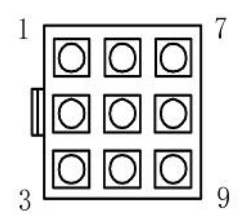
INOVANCE

Amendment	Description

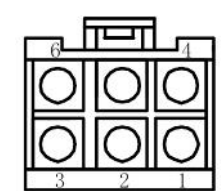
Unit:Millimeter(mm)



Encoder adapter connector



Power wire adapter connector



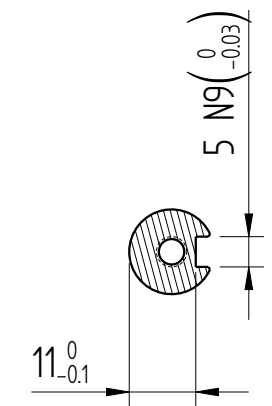
Encoder adapter connector

9pin terminal	3	6	1	4	9	8	7
Core color	blue	purple	brown	black	red	orange	ground wire
definition	PS+	PS—	DC+	DC—	+5V	0V	shield
	Pair		Pair		Pair		

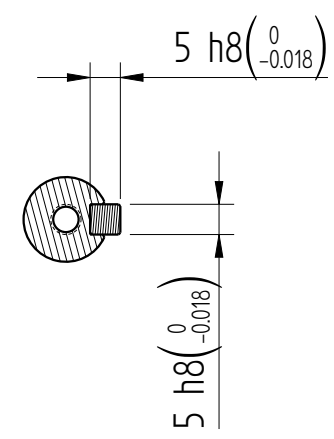
Power wire adapter connector

6pin terminal	5	4	2	1	3	6
Core color	chartreuse	red	yellow	white	brown	blue
definition	PE	W	V	U	BK+	BK—

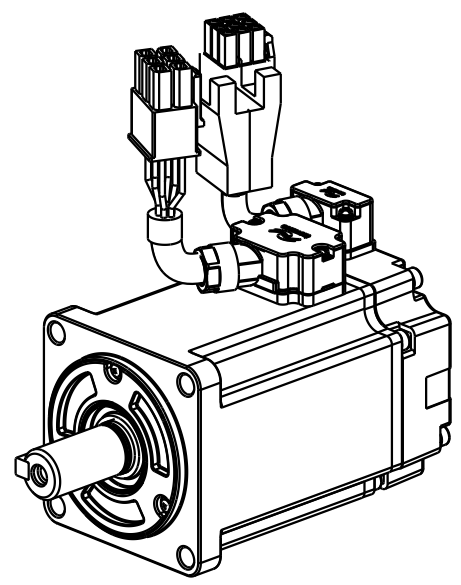
note:
1、The lead wire cable length is 300mm±20mm



Dimension of shaft end



Dimension of shaft end with key



Basic function parameters	
Rated power kW	0.4
Rated voltage V	220
Rated current A	2.5
Peak current at rated speed A	9.8
Rated torque Nm	1.27
Peak torque at rated speed Nm	4.45
Rated speed rpm	3000
Max speed rpm	7000
Rotor inertia kg·cm ²	0.145±10%
Encoder resolution	23bit
Insulation class	F(155)
Protection class	IP67
Static torque of brake Nm	/
Brake power supply V	/
Brake backlash°	/
Duty cycle	S1
Radial load N	≤245
Axial load N	≤74

				Motor Outline Drawing			0111A163-WX	
B01	Replace	/	20250526					
Version	Change method	Changed by	Date					
Design	/			/			Mark	
Check	/							
Craft	/							
Verify	/			Weight	Scale	Version	Page 1 of 1	
Standardization	/			1.11kg	12	B01	Model	MS1H1-40B30CB-A331R-S-INT
Approve	/							